

# NEC MultiSync® LCD 70 Series

Thin-frame LCD monitors ideal for corporate environments



## Helping you work smarter with

# intelligent

## display technologies.

With each new generation of LCD monitors, NEC Display Solutions finds new ways to build upon its tradition of incorporating intelligent technologies, ergonomic designs and value-add services. These are the advantages that allow users to work smarter and enterprises to reduce total cost of ownership. With the NEC MultiSync LCD 70 Series, a family of high-performance flat-panel monitors, the tradition continues with displays that showcase bright screens, low power consumption and enhanced features that deliver tremendous quality and value to your desktop. The end result for you is increased comfort, reduced costs and maximized productivity on a daily basis.

The series, which currently features eight LCD models in 15" to 21" screen sizes and the choice of a silver and white or all black cabinet, offers performance-driven business and home users flexible, reliable monitor solutions that meet virtually any need.

**Screen-enhancing features.** The MultiSync LCD 70 Series incorporates many components aimed at making the user's time in front of the monitor more productive and comfortable. NEC's Rapid Response™ technology, available on all MultiSync LCD 70 Series models, provides for lifelike full-motion video display with response times of 25ms or less. Rapid Response delivers streaming video, while virtually eliminating ghosting or blurring, and achieving as many as 125 frames per second (fps). This remarkably quick motion makes these models better than ever for gaming and video applications such as presentations and streaming web video. No Touch Auto Adjust™ eliminates the hassle of adjusting screen controls when first connecting to a new system. When turning on these monitors for the first time, the monitor and video card communicate to automatically adjust screen settings for optimal viewing. The LCD1970VX, LCD1970NX, LCD2070NX and LCD2170NX also utilize Dynamic Video Mode to enhance the screen's contrast based on the brightness of the image displayed.

### Wide compatibility for today and tomorrow.

With Ambix® dual-input technology—which utilizes

both DVI-D and traditional 15-pin VGA connectors—you can bridge the gap between analog and digital systems by allowing the same monitor to work seamlessly in either environment. Ambix provides compatibility with today's computer systems and is on the forefront of tomorrow's digital output. Digital technology allows for connection with any signal in a preset range, regardless of the frequency output of the video card. Also, because no digital-to-analog conversion is necessary, signal loss is virtually eliminated, resulting in superior picture quality. A standard in the industry for many years, the easy-to-recognize VGA connector ensures hassle-free equipment swaps during technology upgrades.

**Take your control a step further.** Our exclusive NaViSet™ software (available by download) offers an intuitive graphical user interface that allows the user to adjust On Screen Manager (OSM®) display settings via mouse and keyboard instead of using the monitor's up-front buttons. This second generation software provides animated graphics and test patterns to help guide the user through adjustments for the MultiSync LCD 70 Series. For an unprecedented level of control, NaViSet Administrator software for IT professionals (available upon request) contains Windows® Management Instrumentation™ (WMI) for remote control and diagnostics maintenance for all installed, compatible MultiSync LCD 70 Series units. This software provides IT personnel remote access to the monitor and its settings without disrupting the user. All of these control capabilities are made possible using the advanced remote diagnostics and remote control capabilities of the Display Data Channel/Command Interface (DDC/CI). This allows control commands to be sent directly to the monitor by the local system or remotely over an existing network (LAN) by a system administrator. In order to take full advantage of these benefits, users must employ a DDC/CI-compatible graphics card and be running Windows 2000/XP.

As part of the redesigned control button arrangement, users can also take advantage of the multi-directional NaViKey™ on the bottom

of the monitor bezel to adjust screen settings. This key, which has not only allowed for a thinner frame around the screen but has helped reduce the number of control buttons required, provides an easier means of reaching your preferred display settings.

**Bright ideas in design.** MultiSync LCD 70 Series monitors, which feature slim footprints and thin, uniform frames, have been designed for easy, flexible integration into a variety of surroundings, including cramped areas and ergonomically challenged work spaces. This user-friendly design enables you to focus more on what is on-screen, enhancing not only your visual experience but your overall productivity. The thin-frame design makes these models ideal for multiple-monitor configurations, which further enhance user productivity. The built-in power supply eliminates the need for a bulky power brick and the cables it requires, which can clutter your work space. An ergonomically enhanced base allows for up to 110mm of height adjustment and features capabilities for cable management, tilting and swiveling, easily adjusting to each user's preferred angle of vision and further increasing comfort, productivity and ease of use. Users also can choose between silver and white or all black cabinets, allowing them to match their display to systems, laptops or work environments. (LCD2170NX available only in black)



*Offering 110mm of height adjustment and capabilities for cable management, tilting and swiveling, the base adjusts to your preferred viewing orientation.*



figure 1



figure 2

*MultiSync LCD 70 Series models are designed to maximize your comfort and productivity. The multi-directional NaViKey on the bottom of the monitor bezel (figure 1) allows you to easily adjust screen settings, while an integrated 4-port USB 2.0 hub (figure 2), featured on select models, makes it easier than ever for you to connect to peripheral devices.*

#### Easy peripheral connections with a USB hub.

The MultiSync LCD1770NX, LCD1770NXM, LCD1970NX, LCD2070NX and LCD2170NX feature an integrated 4-port USB 2.0 hub, making it easier than ever for you to connect to peripheral devices such as MP3 players, scanners, digital cameras and mice.

#### Enhance your multimedia experience.

The Soundbar 70, which is included with the LCD1770NXM, boosts the senses with amazing sound during presentations or other display applications. This front-firing speaker attachment also is available as an option and can be added to the LCD1770NX, LCD1970NX, LCD2070NX and LCD2170NX to easily add multimedia excitement to the desktop display experience.

#### Intelligent power management ensures a smart investment.

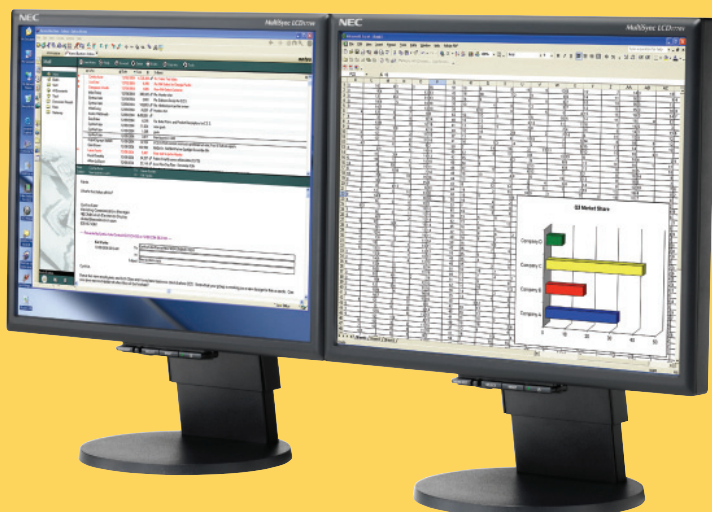
All MultiSync 70 Series models comply with the Environmental Protection Agency's new ENERGY STAR 4.0 Tier 1 requirements, thereby providing only the most energy-efficient desktop performance. Using up to 70% less power and emitting less heat than comparable CRT monitors, these monitors allow you to conserve energy and lower your total cost of ownership. The high-efficiency backlight promotes an extraordinarily long lifetime, reducing not only the power consumption but also the heat generation at the front of the screen. The vacation switch further reduces

electricity costs by completely shutting down the monitor's power.

**Warranty and support provide assurance.** You can rest easy knowing that NEC Display Solutions is available 24 hours a day, 7 days a week for technical support, and a 3-year limited warranty on all models guarantees your satisfaction.

**Add value to your investment.** With Total Trade™, NEC Display Solutions' hassle-free monitor replacement and recycling program, we can facilitate the removal and disposal of your facility's current units in an environmentally friendly manner, while enhancing your desktops with new MultiSync LCD 70 Series displays. Not only is your workload lightened, but you also have the potential to lower your procurement costs and your overall TCO.

Through our optional Premium Protect™ extended service plans, you can take advantage of 1 or 2 additional years of technical service and support, giving you peace of mind for up to 5 years of monitor ownership. The plans take effect at the end of the standard 3-year warranty period and cover all parts and labor that are available under the original warranty as well as lightning and power surge protection.



*The ultra-thin-frame design of the MultiSync LCD 70 Series makes these models ideal for multi-monitor configurations. Studies have shown that setups using more than one monitor contribute to increased user productivity among many other benefits.*

### Series Features & Benefits

**Thin-frame design** allows you to view more of your ideas and less of the monitor bezel, while freeing up more horizontal and vertical desktop space for multiple-monitor applications

**Height-adjustable stand** adds flexibility and comfort to your viewing preferences with swivel, tilt and cable management capabilities

**No Touch Auto Adjust** reduces setup time and provides optimal image settings upon initial power-on

**NaViSet** software offers an expanded and intuitive graphical interface, allowing you to more easily adjust OSM display settings via mouse and keyboard

**XtraView® technology** provides for some of the widest viewing angles available (LCD1970NX, LCD2070NX, LCD2170NX)

**Ambix dual-input technology** allows for digital/analog compatibility with upgraded video cards and software as well as connection to two systems

**Integrated USB 2.0 hub** adds flexibility to your computing by easily connecting you to digital cameras, scanners and more (LCD1770NX, LCD1770NXM, LCD1970NX, LCD2070NX, LCD2170NX)

**Multi-directional NaViKey** allows for easy screen setting adjustments

**Rapid Response technology** delivers virtually uninterrupted, undistorted viewing of high-speed, full-motion video

**High-bright backlight** delivers superior performance for readability and clarity

**Adheres to ISO 13406-2 Class II requirements** for quality screen performance

**Detachable base and arm/wall mounting capabilities** allow you to free up even more desktop space or gain more aesthetic appeal

**Vacation switch** completely shuts down the monitor's power, saving you even more on electricity bills

**ENERGY STAR 4.0 compliance/low power consumption** reduces electrical costs and lowers total cost of ownership

**Cabinet color options of silver and white or all black** allow you to match your system, laptop or work environment (except LCD2170NX)

**Front-firing, multimedia Soundbar 70** provides quality sound (standard on LCD1770NXM; optional on LCD1770NX, LCD1970NX, LCD2070NX, LCD2170NX)

**NEC's quality and reliability** provide peace of mind with a 3-year limited parts and labor warranty (including backlight) and 24/7 customer service and technical support

# NEC MultiSync LCD 70 Series Specifications

Model	MultiSync LCD1570NX	MultiSync LCD1770VX	MultiSync LCD1770NXM	MultiSync LCD1770NX	MultiSync LCD1970VX	MultiSync LCD1970NX	MultiSync LCD2070NX	MultiSync LCD2170NX
<b>Display:</b> Viewable Image Size Pixel Pitch Pixels Per Inch Brightness (typical) Contrast Ratio (typical) Viewing Angle (typical) Response Time (typical) Display Colors	15" 0.297mm 85.5 @ native resolution 250 cd/m <sup>2</sup> 450:1 140 Vert., 160 Hor. (60U/80D/80L/80R) (CR>5) Rapid Response (16ms) More than 16 million	17" 0.264mm 96.2 @ native resolution 250 cd/m <sup>2</sup> 500:1 160 Vert., 160 Hor. (85U/75D/80L/80R) (CR>5) Rapid Response (12ms) More than 16 million	17" 0.264mm 96.2 @ native resolution 250 cd/m <sup>2</sup> 500:1 160 Vert., 160 Hor. (85U/75D/80L/80R) (CR>5) Rapid Response (12ms) More than 16 million	17" 0.264mm 96.2 @ native resolution 250 cd/m <sup>2</sup> 500:1 160 Vert., 160 Hor. (85U/75D/80L/80R) (CR>5) Rapid Response (12ms) More than 16 million	19" 0.294mm 86 @ native resolution 250 cd/m <sup>2</sup> 450:1 160 Vert., 160 Hor. (80U/80D/80L/80R) (CR>5) Rapid Response (16ms) More than 16 million	19" 0.294mm 86 @ native resolution 250 cd/m <sup>2</sup> 800:1 176 Vert., 176 Hor. (88U/88D/88L/88R) (CR>10) Rapid Response (18ms) More than 16 million	20.1" 0.255mm 100 @ native resolution 250 cd/m <sup>2</sup> 400:1 176 Vert., 176 Hor. (88U/88D/88L/88R) (CR>10) Rapid Response (16ms) More than 16 million	21.3" 0.270mm 94 @ native resolution 300 cd/m <sup>2</sup> 1000:1 176 Vert., 176 Hor. (88U/88D/88L/88R) (CR>10) Rapid Response (8ms G-to-G) More than 16 million
<b>Synchronization Range:</b> Horizontal Vertical	31.5-60 kHz (Analog) 31.5-60 kHz (Digital) 56-75 Hz	31.5-81 kHz (Analog) 31.5-69 kHz (Digital) 56-75 Hz	31.5-81 kHz (Analog) 31.5-69 kHz (Digital) 56-75 Hz	31.5-81 kHz (Analog) 31.5-69 kHz (Digital) 56-75 Hz	31.5-81.1 kHz (Analog) 31.5-81.1 kHz (Digital) 56-75 Hz	31.5-81.1 kHz (Analog) 31.5-81.1 kHz (Digital) 56-75 Hz	31.5-91.1 kHz (Analog) 31.5-91.1 kHz (Digital) 56-85 Hz	31.5-91.1 kHz (Analog) 31.5-91.1 kHz (Digital) 56-85 Hz
<b>Input Signal:</b> Video Sync	ANALOG 0.7 Vp-p/75 Ohms Separate sync: TTL Level (Positive/Negative) Composite sync: TTL Level (Positive/Negative) Composite sync on green: (0.3 Vp-p negative 0.7 Vp-p positive)	ANALOG 0.7 Vp-p/75 Ohms Separate sync: TTL Level (Positive/Negative) Composite sync: TTL Level (Positive/Negative) Composite sync on green: (0.3 Vp-p negative 0.7 Vp-p positive)	ANALOG 0.7 Vp-p/75 Ohms Separate sync: TTL Level (Positive/Negative) Composite sync: TTL Level (Positive/Negative) Composite sync on green: (0.3 Vp-p negative 0.7 Vp-p positive)	ANALOG 0.7 Vp-p/75 Ohms Separate sync: TTL Level (Positive/Negative) Composite sync: TTL Level (Positive/Negative) Composite sync on green: (0.3 Vp-p negative 0.7 Vp-p positive)	ANALOG 0.7 Vp-p/75 Ohms Separate sync: TTL Level (Positive/Negative) Composite sync: TTL Level (Positive/Negative) Composite sync on green: (0.3 Vp-p negative 0.7 Vp-p positive)	ANALOG 0.7 Vp-p/75 Ohms Separate sync: TTL Level (Positive/Negative) Composite sync: TTL Level (Positive/Negative) Composite sync on green: (0.3 Vp-p negative 0.7 Vp-p positive)	ANALOG 0.7 Vp-p/75 Ohms Separate sync: TTL Level (Positive/Negative) Composite sync: TTL Level (Positive/Negative) Composite sync on green: (0.3 Vp-p negative 0.7 Vp-p positive)	ANALOG 0.7 Vp-p/75 Ohms Separate sync: TTL Level (Positive/Negative) Composite sync: TTL Level (Positive/Negative) Composite sync on green: (0.3 Vp-p negative 0.7 Vp-p positive)
<b>Inputs</b>	DVI-D and VGA 15 pin D-sub	DVI-D and VGA 15 pin D-sub	DVI-D and VGA 15 pin D-sub	DVI-D and VGA 15 pin D-sub	DVI-D and VGA 15 pin D-sub	DVI-D and VGA 15 pin D-sub	DVI-D and VGA 15 pin D-sub	DVI-D and VGA 15 pin D-sub
<b>Resolutions Supported</b>	ANALOG/DIGITAL 720 x 400 @ 70 Hz 640 x 480 @ 60-75 Hz 800 x 600 @ 56-75 Hz 832 x 624 @ 75 Hz 1024 x 768 @ 60-75 Hz	ANALOG/DIGITAL 720 x 400 @ 70 Hz 640 x 480 @ 60-75 Hz 800 x 600 @ 56-75 Hz 832 x 624 @ 75 Hz 1024 x 768 @ 60-75 Hz 1152 x 864 @ 70-75 Hz 1280 x 960 @ 60-75 Hz 1280 x 1024 @ 60-76 Hz	ANALOG/DIGITAL 720 x 400 @ 70 Hz 640 x 480 @ 60-75 Hz 800 x 600 @ 56-75 Hz 832 x 624 @ 75 Hz 1024 x 768 @ 60-75 Hz 1152 x 864 @ 70-75 Hz 1152 x 870 @ 75 Hz 1280 x 1024 @ 60-75 Hz	ANALOG/DIGITAL 720 x 400 @ 70 Hz 640 x 480 @ 60-75 Hz 800 x 600 @ 56-75 Hz 832 x 624 @ 75 Hz 1024 x 768 @ 60-75 Hz 1152 x 864 @ 70-75 Hz 1152 x 870 @ 75 Hz 1280 x 1024 @ 60-75 Hz	ANALOG/DIGITAL 720 x 400 @ 70-75 Hz 640 x 480 @ 60-75 Hz 800 x 600 @ 56-75 Hz 832 x 624 @ 75 Hz 1024 x 768 @ 60-75 Hz 1152 x 864 @ 75 Hz 1152 x 870 @ 75 Hz 1280 x 960 @ 60 Hz 1280 x 1024 @ 60-75 Hz	ANALOG/DIGITAL 720 x 400 @ 70-75 Hz 640 x 480 @ 60-75 Hz 800 x 600 @ 56-85 Hz 832 x 624 @ 75 Hz 1024 x 768 @ 60-75 Hz 1152 x 864 @ 75 Hz 1152 x 870 @ 75 Hz 1280 x 960 @ 60 Hz 1280 x 1024 @ 60-85 Hz	ANALOG/DIGITAL 720 x 400 @ 85 Hz 640 x 480 @ 60-85 Hz 800 x 600 @ 56-85 Hz 832 x 624 @ 75 Hz 1024 x 768 @ 60-85 Hz 1152 x 864 @ 75 Hz 1152 x 870 @ 75 Hz 1280 x 960 @ 75 Hz 1600 x 1200 @ 60 Hz	ANALOG/DIGITAL 720 x 400 @ 85 Hz 640 x 480 @ 60-85 Hz 800 x 600 @ 56-85 Hz 832 x 624 @ 75 Hz 1024 x 768 @ 60-85 Hz 1152 x 864 @ 85 Hz 1152 x 870 @ 75 Hz 1280 x 960 @ 75 Hz 1280 x 1024 @ 60-85 Hz 1600 x 1200 @ 60 Hz
<b>Native Resolution</b>	1024 x 768 @ 75 Hz	1280 x 1024 @ 60 Hz	1280 x 1024 @ 60 Hz	1280 x 1024 @ 60 Hz	1280 x 1024 @ 60 Hz	1280 x 1024 @ 60 Hz	1600 x 1200 @ 60 Hz	1600 x 1200 @ 60 Hz
<b>Additional Features</b>	Thin-frame (bezel), No Touch Auto Adjust, NaViSet software, sRGB, AccuColor color control, digital smoothing, digital controls, Plug and Play (VESA DDC 1/2B), VESA DPMS power management, OSM user controls, ISO 13406-2 Class II, vacation switch, height-adjustable stand, Ambix	Thin-frame (bezel), No Touch Auto Adjust, NaViSet software, sRGB, AccuColor color control, digital smoothing, digital controls, Plug and Play (VESA DDC 1/2B), VESA DPMS power management, OSM user controls, ISO 13406-2 Class II, vacation switch, height-adjustable stand, Ambix	Thin-frame (bezel), Soundbar 70, No Touch Auto Adjust, NaViSet software, USB 2.0, sRGB, AccuColor color control, digital smoothing, digital controls, Plug and Play (VESA DDC 1/2B), VESA DPMS power management, OSM user controls, ISO 13406-2 Class II, Ambix	Thin-frame (bezel), No Touch Auto Adjust, NaViSet software, USB 2.0, sRGB, AccuColor color control, digital smoothing, digital controls, Plug and Play (VESA DDC 1/2B), VESA DPMS power management, OSM user controls, ISO 13406-2 Class II, vacation switch, height-adjustable stand, Ambix	Thin-frame (bezel), No Touch Auto Adjust, NaViSet software, sRGB, AccuColor color control, digital smoothing, digital controls, Plug and Play (VESA DDC 1/2B), VESA DPMS power management, OSM user controls, ISO 13406-2 Class II, vacation switch, height-adjustable stand, Ambix	Thin-frame (bezel), No Touch Auto Adjust, NaViSet software, sRGB, AccuColor color control, digital smoothing, digital controls, Plug and Play (VESA DDC 1/2B), VESA DPMS power management, OSM user controls, ISO 13406-2 Class II, vacation switch, height-adjustable stand, XtraView, Ambix	Thin-frame (bezel), No Touch Auto Adjust, NaViSet software, USB 2.0, sRGB, AccuColor color control, digital smoothing, digital controls, Plug and Play (VESA DDC 1/2B), VESA DPMS power management, OSM user controls, ISO 13406-2 Class II, vacation switch, height-adjustable stand, XtraView, Ambix	Thin-frame (bezel), No Touch Auto Adjust, NaViSet software, USB 2.0, sRGB, AccuColor color control, digital smoothing, digital controls, Plug and Play (VESA DDC 1/2B), VESA DPMS power management, OSM user controls, ISO 13406-2 Class II, vacation switch, height-adjustable stand, XtraView, Ambix
<b>Voltage Rating</b>	AC 100-120V/AC 220-240V	AC 100-120V/AC 220-240V	AC 100-120V/AC 220-240V	AC 100-120V/AC 220-240V	AC 100-120V/AC 220-240V	AC 100-120V/AC 220-240V	AC 100-120V/AC 220-240V	AC 100-120V/AC 220-240V
<b>Power Consumption (typical):</b> On Power Savings Mode	20W <2W	36W <2W	55W <2W	48W <2W	36W <2W	52W <2W	74W <3W	66W <2W
<b>Net Dimensions (WxHxD):</b> (with stand)  (without stand)	13.2 x 12-15 x 7 in/ 336.4 x 305-380 x 178mm  13.2 x 10.3 x 2.2 in/ 336.4 x 261.9 x 56mm	14.4 x 14.3-18.6 x 7.8 in/ 367 x 362.5-472.5 x 198mm  14.4 x 12.5 x 2.3 in/ 367 x 317 x 59.5mm	14.4 x 14.5-18.6 x 7.8 in/ 367 x 368.6-472.5 x 198mm  14.4 x 13.7 x 2.3 in/ 367 x 347.6 x 59.5mm	14.4 x 14.3-18.6 x 7.8 in/ 367 x 362.5-472.5 x 198mm  14.4 x 12.5 x 2.3 in/ 367 x 317 x 59.5mm	16.2 x 15.2-19.5 x 8.7 in/ 412.5 x 386.5-496.5 x 220mm  16.2 x 13.7 x 2.6 in/ 412.5 x 347.5 x 66mm	16.2 x 15.2-19.5 x 8.7 in/ 412.5 x 386.5-496.5 x 220mm  16.2 x 13.7 x 2.6 in/ 412.5 x 347.5 x 66mm	17.4 x 15.3-19.6 x 8.7 in/ 442 x 388.5-498.5 x 220mm  17.4 x 13.4 x 2.8 in/ 442 x 340 x 72mm	18.3 x 15.6-20 x 8.7 in/ 466 x 397.7-507.7 x 220mm  18.3 x 14.3 x 2.8 in/ 466 x 362 x 71mm
<b>Net Weight</b> (with stand) (without stand)	8.4 lbs/3.8 kg 6.2 lbs/2.8 kg	13.2 lbs/6 kg 9.3 lbs/4.2 kg	14.3 lbs/6.5 kg 10.4 lbs/4.7 kg	13.4 lbs/6.1 kg 9.5 lbs/4.3 kg	15.4 lbs/7 kg 10.8 lbs/4.9 kg	16.5 lbs/7.5 kg 11.9 lbs/5.4 kg	19 lbs/8.6 kg 12.6 lbs/5.7 kg	20.3 lbs/9.2 kg 14.1 lbs/6.4 kg
<b>VESA Hole Configuration Specifications</b>	75mm x 75mm	100mm x 100mm	100mm x 100mm	100mm x 100mm	100mm x 100mm	100mm x 100mm	100mm x 100mm	100mm x 100mm
<b>Environmental Conditions:</b> Operating Temperature Operating Humidity Operating Altitude Storage Temperature Storage Humidity Storage Altitude	5-35°C/41-95°F 30-80% 3,048 m/10,000 ft -10-60°C/14-140°F 10-85% 12,192 m/40,000 ft	5-35°C/41-95°F 10-80% 3,048 m/10,000 ft -20-60°C/4-140°F 5-95% 16,000 m/52,493 ft	5-35°C/41-95°F 10-80% 3,048 m/10,000 ft -20-60°C/4-140°F 5-95% 16,000 m/52,493 ft	5-35°C/41-95°F 10-80% 3,048 m/10,000 ft -20-60°C/4-140°F 10-85% 16,000 m/52,493 ft	5-35°C/41-95°F 30-80% 3,048 m/10,000 ft -10-60°C/14-140°F 10-85% 9,144 m/30,000 ft	5-35°C/41-95°F 30-80% 3,048 m/10,000 ft -10-60°C/14-140°F 10-85% 12,192 m/40,000 ft	5-35°C/41-95°F 30-80% 3,658 m/12,000 ft -10-60°C/14-140°F 10-85% 12,192 m/40,000 ft	5-35°C/41-95°F 30-80% 3,658 m/12,000 ft -10-60°C/14-140°F 10-85% 12,192 m/40,000 ft
<b>Limited Warranty</b>	3 years parts and labor, including backlight	3 years parts and labor, including backlight	3 years parts and labor, including backlight	3 years parts and labor, including backlight	3 years parts and labor, including backlight	3 years parts and labor, including backlight	3 years parts and labor, including backlight	3 years parts and labor, including backlight
<b>Technical Support</b>	24 hours/7 days	24 hours/7 days	24 hours/7 days	24 hours/7 days	24 hours/7 days	24 hours/7 days	24 hours/7 days	24 hours/7 days

NEC MultiSync 70 Series LCDs



Ambix, MultiSync, OSM and XtraView are registered trademarks and NaViKey, NaViSet, No Touch Auto Adjust, Total Trade, Rapid Response and Premium Protect are trademarks of NEC Display Solutions. All other brand or product names are trademarks or registered trademarks of their respective holders. Product specifications subject to change.  
©2005 NEC Display Solutions of America, Inc. All rights reserved.  
Item No. 70series-1 8/05 ver. 5.

## NEC Display Solutions

500 Park Boulevard, Suite 1100  
Itasca, Illinois 60143  
866-NEC-MORE  
www.necdisplay.com

Empowered by Innovation

